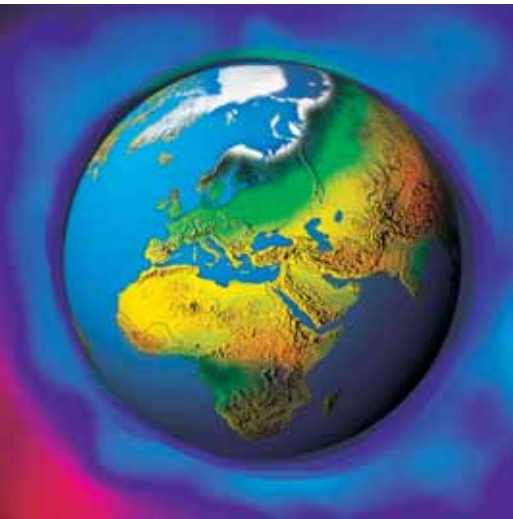


# CHART TRACK

THE TOTAL CHART MANAGEMENT SYSTEM

THE SMART WAY TO STAY UP-TO-DATE





**CHART-TRACK IS A COMPLETE CHART  
AND PUBLICATION MANAGEMENT SOLUTION.**

- > **IT'S COMPUTERISED.**
- > **IT'S EASY TO USE.**
- > **IT'S INTELLIGENT**
- > **IT'S ECONOMICAL**
- > **IT'S ACCOUNTABLE**
- > **IT'S ALWAYS UP-TO-DATE**

**CHART-TRACK SAVES YOU TIME  
AND KEEPS YOUR FLEET SECURE. HERE'S HOW...**





**YOUR CHARTS AND  
NAUTICAL PUBLICATIONS  
ARE THE BEDROCK OF SAFE NAVIGATION.**

Keeping these up to scratch, chasing the latest editions and capturing every last detailed change has always been a complicated and time-consuming job.

Having the latest information there when you want it - and when you need it most - is a priority.

Crews face ever-faster turnaround times in port. The risk of cutting corners and neglecting routine tasks is ever-present. Keeping the ship's charts and publications inventory updated is no exception.

Mistakes can be costly. With IMO SOLAS Chapter V regulation 27 requiring that vessels maintain an up-to-date complement of charts and nautical publications, Port State Controllers are ever vigilant, checking that in this highly regulated world in which we operate, everything is as it should be.

And rightly so. The consequences can be far reaching. Uncorrected or out-of-date, a single chart can spell disaster.



## 1. ON-BOARD INVENTORY MANAGEMENT

With Chart-Track, a ship's officer can manage his entire chart and publication inventory.

Intuitive and easy-to-use, the programme tracks each chart and publication held on board. If a new edition is announced, Chart-Track automatically places an order with his chart agent.

Notices to Mariners and tracings are downloaded every week via e-mail. At the same time, the ship's complete chart and publication database is updated.

There's no need to trawl through each Notice to Mariners to determine which edition is relevant for the ship's inventory or trading area.

Each week, Chart-Track captures updated information and automatically compares the list of new editions with the ship's current on-board inventory.

If it detects that a new edition exists, an entry is added to the system's order file.



*The status of each chart on board can be checked and updated in minutes*



*Tracing and tracking publications is easy and automatic*



The ship's officer can access and review the order file, amend it as necessary, then confirm the order which is sent directly to the ship's chart agent where it is registered and an acknowledgment sent back to the ship.

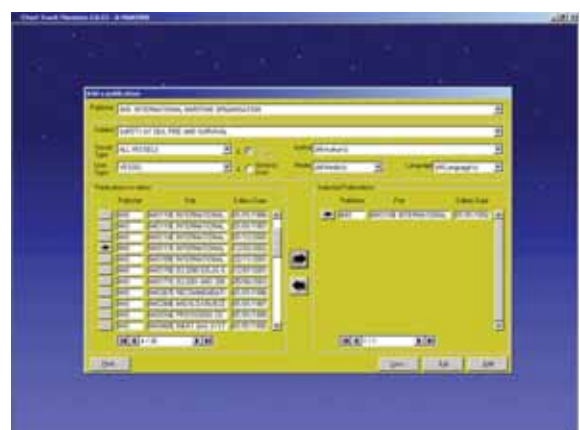
As soon as the new edition is available, it will be supplied to the vessel.

Chart-Track will look after the ship's entire library. Its database includes an extensive list of titles, with a publications portfolio that includes:

- IMO
- UIT/ITU
- USCG
- OCIMF
- ICS
- Witberby
- The UK Stationery Office
- Fairplay
- Lloyd's
- WHO
- ILO
- and many more...



The interface can be tailored ,for example, to include a confirmation from the ship's management office before an order is fulfills



A complete database covering the ship's library is included within the programme



## 2. SIMPLIFIED CHART CORRECTING

With Chart-Track, correcting charts becomes foolproof.

Each week, the officer in charge of keeping the ship's charts and publications up to date initiates a request to the Chart-Track server.

News of any changes to the ship's inventory since the last update is embedded in the request.

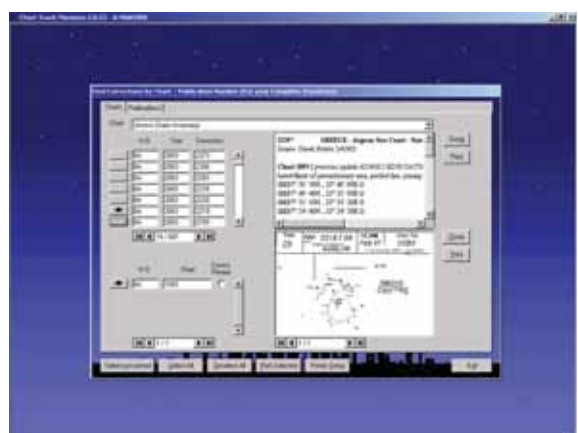
By return, the ship receives only those corrections that need to be applied - either individually or in batch form - to charts currently held in the ship's inventory.

Corrections arrive via e-mail and are easily transferred into the Chart-Track database. Those selected are printed out on tracing paper to provide a clear and unambiguous drawing of the correction to be applied. Alternatively, colour blocks can be printed on an inkjet output and pasted directly on the chart.

Using Chart-Track's output, the likelihood of errors is reduced and the safety of ship and crew enhanced.



*Access to and output of corrected chart data follows a familiar industry-standard layout*



*Considerable time-saving is achieved by having all corrections pre-sorted according to the vessel's actual inventory*





## SELECTIVE

Chart-Track goes further. It doesn't just isolate and match your ship's current inventory of charts and publications. It will pinpoint only those that are currently relevant and update them accordingly.

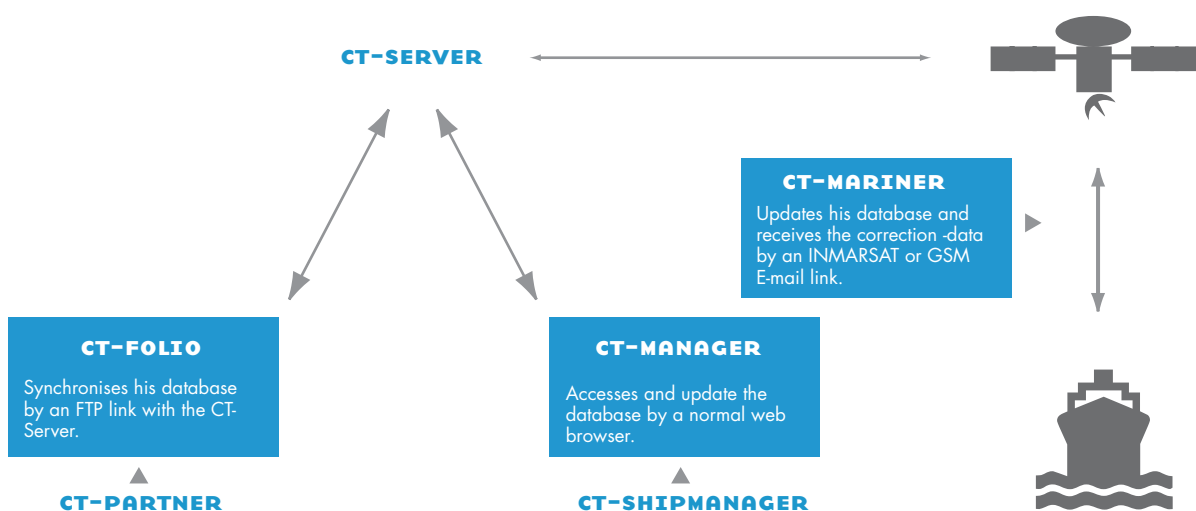
Because SOLAS only requires that charts and publications for the current voyage or trading pattern be correct, there's no need for an officer and his crew to spend time correcting charts for areas which the ship is unlikely to visit for some time.

Chart-Track therefore lets you activate and de-active charts and books in the ship's inventory.

Whenever these are required, Chart-Track will re-activate them, seek out any updates and print up the corrections you need. You'll keep your communications costs down and be back up to date in minutes.

All of which means less work, better time management, and the confidence that comes from knowing that you've channelled your energies in the right place to guarantee the ship and crew's safety.

## THE COMMUNICATION FLOW



### 3. ON-SHORE SHIP MANAGEMENT



Whether looking after a single ship or an entire fleet, managers ashore can access each vessel's inventory via the Internet, using a password protected website.

They can check on...

- Current inventory status by vessel
- Current status of chart corrections on board - looking at how frequently these are downloaded and how quickly they're implemented
- Ship's orders - managing and approving these online

Chart-Track will help superintendents manage the safety of each vessel without the need for manual reports from the ship's officers.

**It provides transparency and accountability.**



*Ship managers have access to their fleet data via the internet*



*Total control can be maintained from shore-side if required*



## A WORKING PARTNERSHIP

Managers, officers and crew have already recognised the benefits of working with Chart-Track.

Its friendly, intuitive format means it's easy to understand. Learning curves are short, irrespective of language, experience or education.

They like its comprehensive user guide.

They appreciate its built-in animated tutorial programme.

They can rely on the back-up of a professional help desk that can be reached by e-mail, phone or fax.

Chart-Track automates and simplifies time-consuming and often tedious procedures.

It ensures a smoother, more rapid transfer of important navigational data.

It shifts the responsibility of following up new editions into the hands of professional chart agents, tapping their experience to assure a superior service.

It streamlines record-keeping and reporting with correction logs, inventories, checklists and order forms which are all linked and located in one place.

Best of all, Chart-Track provides shipping professionals with one of the most cost-effective ways to guarantee safety at sea.

**Find out how Chart-Track can meet your needs, contact your Chart Track agent today to arrange a demonstration.**



# CHART TRACK

THE TOTAL CHART MANAGEMENT SYSTEM

[WWW.CHARTTRACK.COM](http://WWW.CHARTTRACK.COM)

YOUR CHART-TRACK AGENT: